

Área 60

Exterior pathway light

Claudi Aguiló, Xavier Nogués
2020



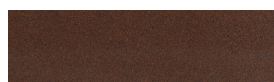
Product description

Certificates



Finishes

Structure



Corten steel

Interior reflector



Polished stainless steel mirror

The finishes shown are purely indicative. The corten steel changes colour as it naturally rusts when exposed to air.

Materials

- Pathway light made with Corten steel sheet.
- Reflector made of AISI 304 mirror polished stainless steel (also available in AISI 316 stainless steel).
- Translucent polycarbonate diffuser.
- AISI 304 stainless steel protection grille.
- A2 stainless steel hardware.

Installation and maintenance

- The pathway light is delivered in a package, together with the installation and assembly instructions, and the hardware.
- The element is secured with a concrete block in the pavement, with a groove for electrical connection, produced on site using four fixing studs with corrosion protection.
- Clean using pH neutral, alcohol-free, non-abrasive cleaning products.

Regulations

- UNE-EN 60529
- UNE-EN 60598
- UNE-EN 55015
- UNE-EN 61000
- UNE-EN 50102
- UNE-EN 62031
- Lighting system with CE marking from a laboratory certified by ENAC [Spanish National Accreditation Body].
- IP55 (dust and water that may enter the structure will not prevent the electronic components from functioning correctly).
- IP66 (hermetically protected from penetration of dust and water jets).
- IK10 (protected from external mechanical impacts).
- Electrical class: Class I (CE)

Technical information

System power (W)

High efficiency optical unit
- 8 LEDs 10 W

Operating current (mA)

- 350

Colour temperature (K)

- 3000 CRI min 80

Other colour temperatures and/or CRIs are available upon request.

Protocols and control

Control

- TRIAC/Phase-cut
- On/Off

Operating voltage

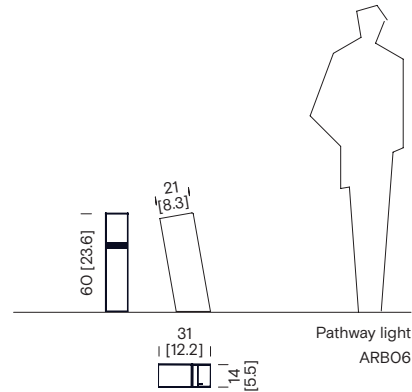
- 230V 50Hz (CE)

Weight kg [lb]

- Pathway light: 13.6 [30]

Approximate weight without packaging.

Dimensions cm [in]



Lighting distribution

Ground washer
Area beam

LOR 100%
ULOR 2%

C Halfplanes

0° — 180°
90° — 270°

