

# Mondrian

## Tree grate

Antoni Roselló  
2001

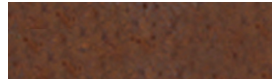


## Product description

### Certificates



### Finishes



Iron

The finishes shown are purely indicative. Suitable for coastal areas.

### Materials

- Elements in two or three parts, made from nodular cast iron with a shot-blasted finish and no post-treatment.
- S235 JR hot-dip galvanised steel frame.

### Installation and maintenance

- The element is supplied disassembled.
- Installation and assembly instructions and hardware included.
- It does not require any maintenance.

### Regulations

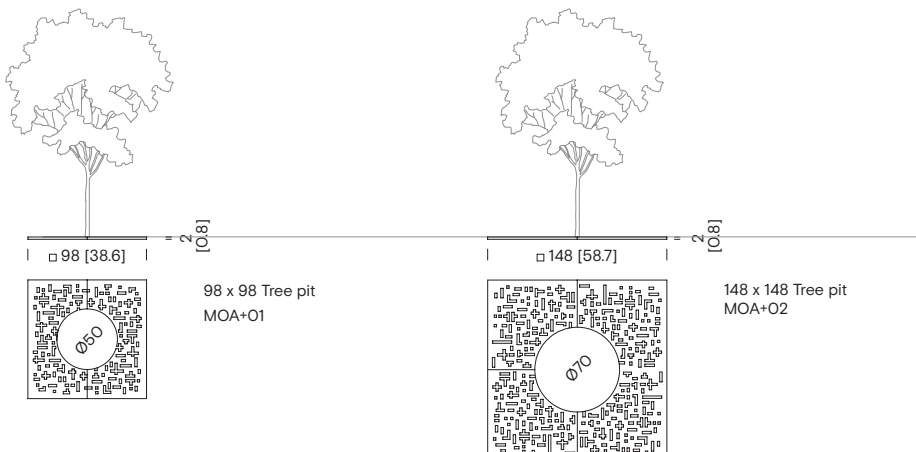
- ASTM A 536
- DIN 1693: GGG 50
- EN-ISO 146
- GR 80/55/06
- UNE 41510
- UNE-EN 124

### Weight kg [lb]

- 98 x 98: 84 [185.2]
- 148 x 148: 204 [449.7]

Approximate weight without packaging.

### Dimensions cm [in]



Parc de Belloch, Ctra. C251, km. 5,6, 08430 La Roca (Barcelona)  
Warehouse, Pol. Ind. Sud, Avenida del Vallés nº19, 08440 Cardedeu (Barcelona)

Last updated: 07/04/2025. For further information, go to [urbidermis.com](http://urbidermis.com) / Tel. +34 938 619 100 / [hola@urbidermis.com](mailto:hola@urbidermis.com)  
Technical information provided by Urbidermis may be modified without prior notice. We protect intellectual property.

