

108 Streetlight

Enric Batlle, Joan Roig, 2007

Urbidermis



CE RoHS



Materials

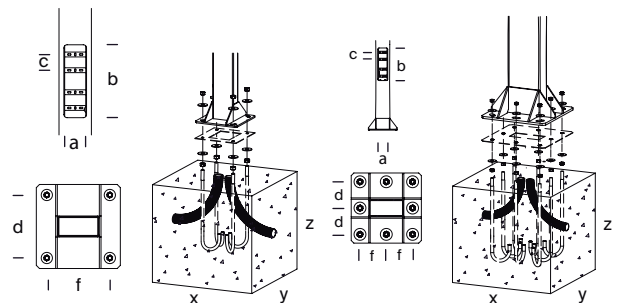
Column and arm made of a continuous galvanized, primed and painted steel tube section (S-275 JR Class 1), measuring 200 x 100 mm [7 x 3 in] and three heights of 4,70 m [15 ft], 6,20 m [20 ft] and 7,70 m [25 ft].

Installation

Installation by means of a concrete block, with a groove for electrical connection, made on site and four or eight anchor bolts per column, depending on the height, 0.20 m below the level of the pavement. The element is delivered disassembled in two parts: luminaire and column. Instructions, hardware, template and anchor bolts included.

* Recommendations: for calculation in type II terrain (according to UNE-40) and wind of 29m / s, with soil formed by loose or wet sand of medium compactness (E0 = 4800 KN / m2) and concrete foundations type HM-20. Non-binding information.

We advise to carry out checks in each situation.



| Reference | Total height (m) [ft] | Visible height (m) [ft] | Outer dimensions (mm) [in] (d) | Thickness (mm) [in] | Base plate (mm) [in] | Distance between bolts (mm) [in] (d,f) | Bolts (f) | N° Doors | Door (a/b/c) (mm) [in] | Foundation (x/y/z) (mm) [in] |
|-----------|-----------------------|-------------------------|--------------------------------|---------------------|----------------------|--|-----------|----------|-----------------------------------|------------------------------|
| C8F41P | 4.7 [15] | 4.5 [15] | 200x100 [8x4] | 4 [0.16] | □ 400x12 [16x0.5] | □ 300 [12] | M18x500x4 | 1 | 130x450x97 and 136 [5x18x4] and 5 | 1000x1000x600 [39x39x24] |
| C8F51P | 6.2 [20] | 6.0 [20] | 200x100 [8x4] | 4 [0.16] | □ 400x12 [16x0.5] | □ 300 [12] | M18x500x4 | 1 | 130x450x97 and 136 [5x18x4] and 5 | 1200x1200x800 [47x47x31] |
| C8F61P | 7.7 [25] | 7.5 [25] | 200x100 [8x4] | 5 [0.20] | □ 400x12 [16x0.5] | □ 150 [6] | M18x500x8 | 1 | 130x450x97 and 136 [5x18x4] and 5 | 1400x1400x800 [55x55x31] |

Standards

UNE-EN 40-5, UNE-EN ISO-1461, UNE-EN 60529, UNE-EN 60598, UNE-EN 55015, UNE-EN 61000, UNE-EN 50102, UNE-EN 62031.

Light system with CE marking made in ENAC-certified laboratory.

IP66 (protection from dust ingress and high-pressure water jets), Suitable for wet locations.

IK08 (protection against external mechanical impacts).

Electrical rating

Class I (CE)

108 Streetlight

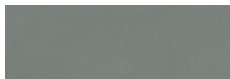
Enric Batlle, Joan Roig, 2007

Urbidermis

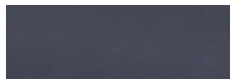
Finishes



Light grey



Medium grey



Dark grey

*The colours shown are merely indicative and may differ from reality. (Other colours on request)

**Request finishes for marine environments.

Weights kg [lb] (unpacked)

7,7 m: 230 [507.063].

6,2 m: 170 [374.786]

4,7 m: 127,5 [281.089].

Technical information

High-efficiency optical unit with 6, 12 or 18 LEDs multichip.

Nominal lamp power (W)

6 LEDs: 23 / 33

12 LEDs: 46 / 66

18 LEDs: 69 / 99

System power (W)

6 LEDs: 25 / 36

12 LEDs: 51 / 72

18 LEDs: 76 / 108

Operating current (mA)

350, 500

Colour temperature (K)

3000 CRI min70, 4000 CRI min70

Power supply

Constant current driver.

Operating voltage

220-240V 50-60Hz (CE)

Recommended wire

0,6/1 kV 3x2,5mm²

Operating rated temperature (°C)

30.

Lifetime

TM21 L70 (10k) > 60.000 h. Thanks to an optimised thermal design, the luminous flux is maintained up to 70% after 60.000 h.

Regulation

1-10V / DALI / Header flux regulation / Programmable automatic regulation / Wireless connection through node to street lighting management platforms. The LED luminaire may be regulated using a number of differing interfaces. These controls allow specific, individual control of light, reducing energy consumption in a sustainable manner. Constant light output (clo) Assures a constant lumen output from the luminaire throughout its lifetime.

Overvoltage protection

10kV

Power factor (cos phi):

| LED n° | Current (mA) | P (W) 100%, CLO 80% | LED n° | Current (mA) | P (W) 100%, CLO 80% |
|--------|--------------|---------------------|--------|--------------|---------------------|
| 6 | 350 | 0.95 | 18 | 350 | 0.98 |
| | 500 | 0.97 | | 500 | 0.99 |
| 12 | 350 | 0.95 | | | |
| | 500 | 0.97 | | | |

Light distributions

Asymmetric



TIIIA



TIIIB



TIIIC



TIIID

Upper Light Output Ratio (ULOR%)

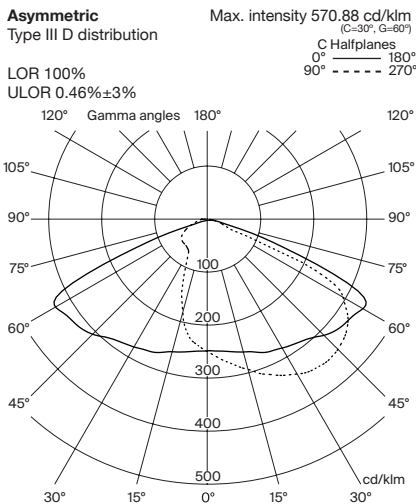
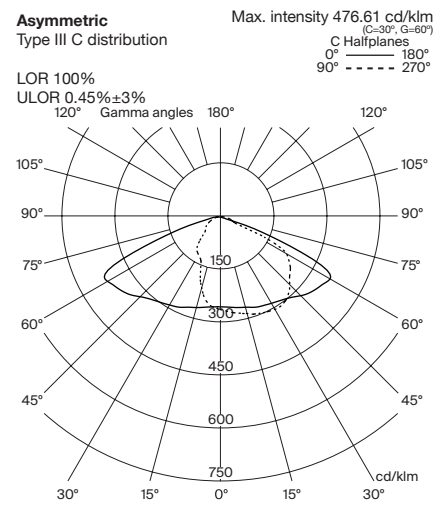
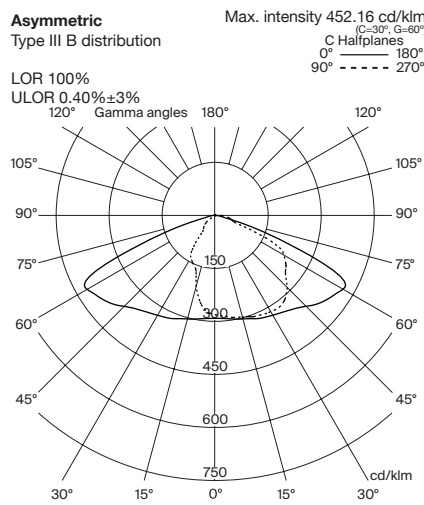
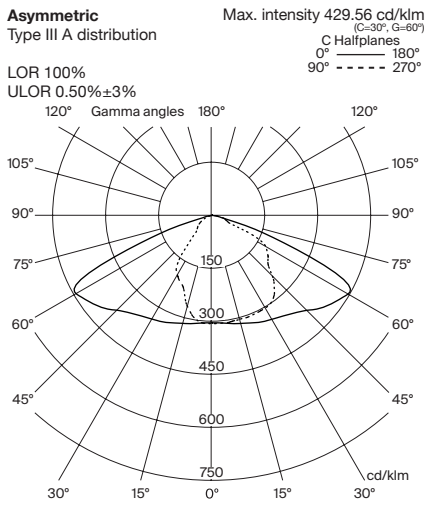
Type III A: 0.50

Type III B: 0.40

Type III C: 0.45

Type III D: 0.46

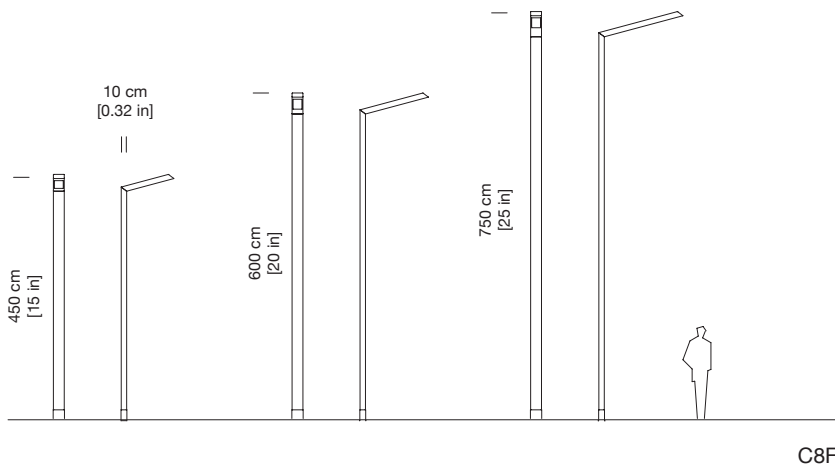
| Reference | LEDs nº | Colour T _c (K) | Current (mA) | Power lamp (W) | System power (W) | IESNA TIII A | | IESNA TIII B | | IESNA TIII C | | IESNA TIII D | |
|--------------|---------|---------------------------|--------------|----------------|------------------|--------------------|-----------------|--------------------|-----------------|--------------------|-----------------|--------------------|-----------------|
| | | | | | | Luminous flux (lm) | Efficacy (lm/W) | Luminous flux (lm) | Efficacy (lm/W) | Luminous flux (lm) | Efficacy (lm/W) | Luminous flux (lm) | Efficacy (lm/W) |
| C8FL06A1xxxx | 6 | 3000 CRI min70 | 350 | 23 | 25 | 2890 | 114 | - | - | - | - | 2890 | 114 |
| C8FL06B1xxxx | | | 500 | 33 | 36 | 3925 | 109 | - | - | - | - | 3925 | 109 |
| C8FL06A2xxxx | | 4000 CRI min70 | 350 | 23 | 25 | 3162 | 125 | - | - | - | - | 3162 | 125 |
| C8FL06B2xxxx | | | 500 | 33 | 36 | 4315 | 120 | - | - | - | - | 4315 | 120 |
| C8FL12A1xxxx | 12 | 3000 CRI min70 | 350 | 46 | 51 | 5779 | 114 | - | - | 5779 | 114 | 5779 | 114 |
| C8FL12B1xxxx | | | 500 | 66 | 72 | 7849 | 109 | - | - | 7849 | 109 | 7849 | 109 |
| C8FL12A2xxxx | | 4000 CRI min70 | 350 | 46 | 51 | 6324 | 125 | - | - | 6324 | 125 | 6324 | 125 |
| C8FL12B2xxxx | | | 500 | 66 | 72 | 8630 | 120 | - | - | 8630 | 120 | 8630 | 120 |
| C8FL18A1xxxx | 18 | 3000 CRI min70 | 350 | 69 | 76 | 8669 | 114 | 8669 | 114 | - | - | 8669 | 114 |
| C8FL18B1xxxx | | | 500 | 99 | 108 | 11774 | 109 | 11774 | 109 | - | - | 11774 | 109 |
| C8FL18A2xxxx | | 4000 CRI min70 | 350 | 69 | 76 | 9486 | 125 | 9486 | 125 | - | - | 9486 | 125 |
| C8FL18B2xxxx | | | 500 | 99 | 108 | 12945 | 120 | 12945 | 120 | - | - | 12945 | 120 |



108 Streetlight

Enric Batlle, Joan Roig, 2007

Urbidermis



Headquarters Parc de Belloch
Ctra. C-251, Km 5,6
E-08430 La Roca (Barcelona, Spain)
+34 938 619 100

Warehouse
Carrer del Fou. Polígono Industrial Sud
E-08440 Cardedeu (Barcelona, Spain)
+34 938 619 182

