



### Materials

Accessory for installing a floodlight on a catenary. It allows a 360° degree rotation on plain view to orient the Arne floodlight. Primed and powder coated stainless steel bracket. Primed and powder coated injected aluminium support. Matt black injected PA6 bracket joint. Stainless steel screws.

### Installation

Fix the accessory to the floodlight and subsequently the assembly to the catenary. The anchoring system is integrated. Metal wire range admissible: Ø 6-8 mm [0.23-0.31]. The accessory is delivered disassembled. Instructions and screws included.  
\* Floodlight and cable for catenary not included.

For further information go to [urbidermis.com](http://urbidermis.com)

### Finishes



Light grey



Medium grey



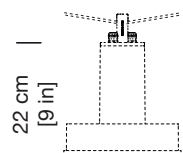
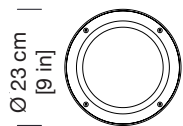
Dark grey

\*The colours shown are merely indicative and may differ from reality. (Other colours on request)

\*\*Request finishes for marine environments.

### Weight kg [lb] (unpacked)

0,8 [1.76]



ARPS03

Headquarters Parc de Belloch  
Ctra. C-251, Km 5,6  
E-08430 La Roca (Barcelona, Spain)  
+34 938 619 100

Warehouse  
Carrer del Fou. Polígono Industrial Sud  
E-08440 Cardedeu (Barcelona, Spain)  
+34 938 619 182

