

LamparaAlta Streetlight

Beth Galí, Màrius Quintana, 1983

Urbidermis



CE RoHS



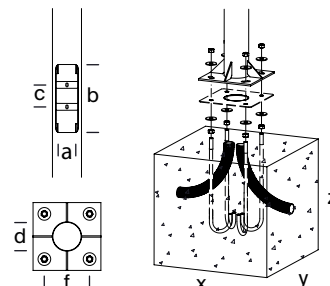
Materials

Curved shade made of galvanised and primed steel with White paint finish. Bracket for shade and floodlight made of hot-dip galvanised and primed steel with Blue RAL5023 paint finish. Painted cast aluminium floodlight with Light grey paint finish and tempered glass cover. Nikolson pole made of hot-dip galvanised and primed steel with paint finish. The base tube is Ø 127 mm [5 in] and 1.00 m [3 ft] high. The upper tube is Ø 100 mm [4 in] and 2.80 m [9 ft] high. The connecting ring between the two tubes is made of molded steel.

Installation

The pole is fixed using a concrete cube, with groove for wiring, made on-site and four pole anchor bolts, 20 cm [8 in] below the pavement surface. The element is delivered disassembled in four parts: pole, structure, brace and floodlights. Instructions, screws, template and pole anchor bolts are included. *Recommendations: for calculation in ground type II (according to UNE-40) and wind speed of 29 m/s, with soil formed by loose or wet dirt or sand of medium compactness ($E_0 = 4800 \text{ KN/m}^2$), with HM-20 concrete. Non-binding information. We advise to carry out checks for each situation.

For further information log onto urbidermis.com



Standards

UNE-EN 60529, UNE-EN 60598, UNE-EN 55015, UNE-EN 61000, UNE-EN 50102, UNE-EN 62031.

CE marked lighting system made by a laboratory certified by ENAC.

IP66 (the electrical components are protected from dust ingress and high-pressure water jets)

IK08 (protection against external mechanical impacts).

Electrical Class

Class I (CE)

Finishes

Luminaire



Light grey

Pole



Light grey

Shade



White

Bracket



Blue RAL 5023

*The colours shown are merely indicative and may differ from reality. (Other colours available to order)

**Consult finishes for marine environments.

Weight kg [lb] (unpacked)

27,8 [61.29]

LamparaAlta Streetlight

Beth Galí, Màrius Quintana, 1983

Urbidermis

Technical information

High-efficiency optical unit with 12 LEDs

Nominal lamp power (W)

50

System power (W)

52

Operating current (mA)

350

Colour temperature (K)

3000 CRI min80

Power supply

Constant current driver

Temperature operating range (°C)

Ta 30.

Regulation

1-10V / DALI / Header flux regulation / Programmable automatic regulation.

The LED luminaire may be regulated using a number of differing interfaces. These controls allow specific, individual control of light, reducing energy consumption in a sustainable manner. Constant light output (clo) Assures a constant lumen output from the luminaire throughout its lifetime.

Lifetime

TM21 L70 (10k) > 60.000 h.

Thanks to an optimised thermal design, the luminous flux is maintained up to 70% after 60.000 h.

Operating voltage

220-240V 50-60Hz (CE)

Recommended wire

0,6/1 kV 3x2,5mm² / 0,6/1 kV 5x1,5mm² (prog.)

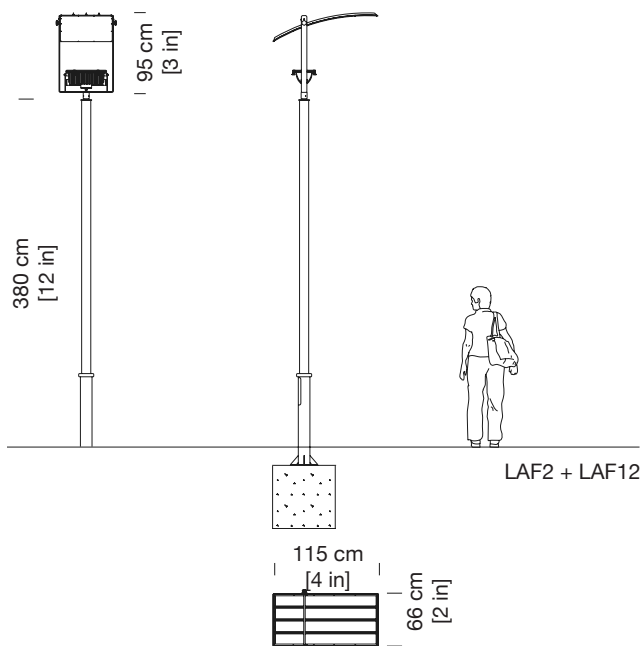
Light distribution

Asymmetric



Widespot

*Screen tilt 14°



Headquarters Parc de Belloch
Ctra. C-251, Km 5,6
E-08430 La Roca (Barcelona, Spain)
+34 938 619 100

Warehouse
Carrer del Fou. Polígono Industrial Sud
E-08440 Cardedeu (Barcelona, Spain)
+34 938 619 182

