

Rama

Accessory for cylindrical column-mounting

Gonzalo Milá
2000



Product description

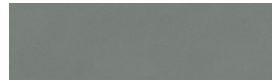
Characteristics

Accessory for installing one or two luminaires on a column of Ø127 mm.

Finishes



Light grey



Medium grey



Dark grey

The colours shown are purely indicative. Other colours are available upon request. Check finishes for marine environments.

Materials

- Anodised injection-moulded aluminium EN-AC-47100 flange with powder-coated finish, suitable for C5 zones.
- A2 stainless steel hardware.

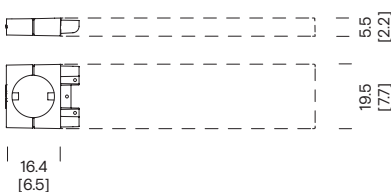
Installation

- Attach the accessory to the column, and then attach the luminaire to the accessory.
- The anchoring system is integrated into the luminaire.
- The accessory is delivered separately: no luminaire included.
- Instructions and hardware included.

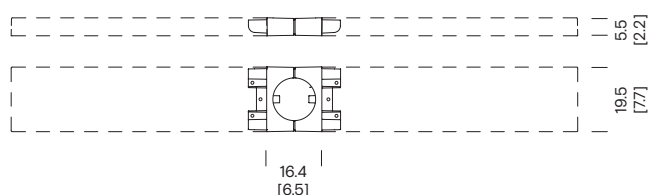
Weight kg [lb]

- Single accessory: 1.7 [3.7]
 - Double accessory: 1.9 [4.2]
- Approximate weight without packaging.

Dimensions cm [in]



RAA01

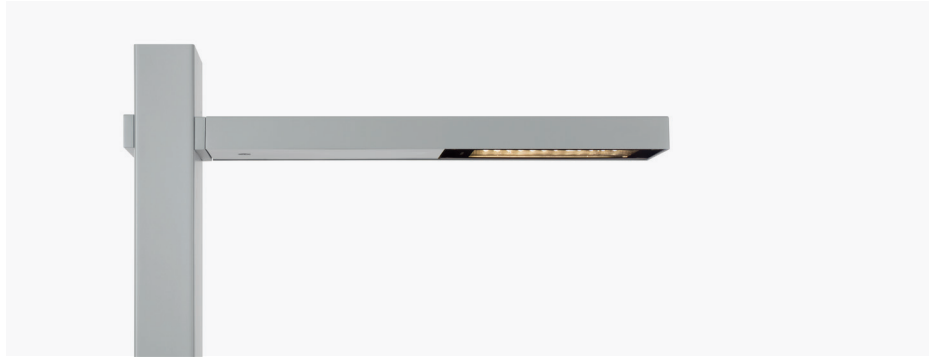


RAA02

Rama

Accessory for flat
column-mounting

Gonzalo Milá
2000



Product description

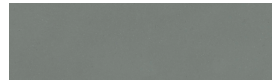
Characteristics

Accessory for installing one or two luminaires on a flat column.

Finishes



Light grey



Medium grey



Dark grey

The colours shown are purely indicative. Other colours are available upon request. Check finishes for marine environments.

Materials

- Anodised injection-moulded aluminium EN-AC-47100 flange with powder-coated finish, suitable for C5 zones.
- A2 stainless steel hardware.

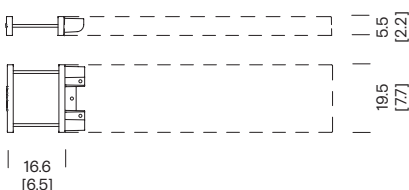
Installation

- Attach the accessory to the column, and then attach the luminaire to the accessory.
- The anchoring system is integrated into the luminaire.
- The accessory is delivered separately: no luminaire included.
- Instructions and hardware included.

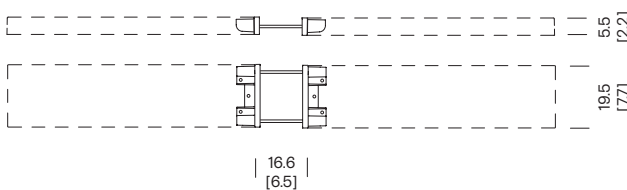
Weight kg [lb]

- Single accessory: 0.6 [1.3]
 - Double accessory: 0.8 [1.8]
- Approximate weight without packaging.

Dimensions cm [in]



RAA03



RAA04

Rama

Accessory for sleeve
column-mounting

Gonzalo Milá
2000



Product description

Characteristics

Accessory for installing a luminaire on a 50/60/62 mm sleeve.

The luminaire can be angled from -5° to $+90^\circ$, adapting the orientation of the luminaire in relation to the column.

Finishes



Light grey



Medium grey



Dark grey

The colours shown are purely indicative. Other colours are available upon request. Check finishes for marine environments.

Materials

- Anodised injection-moulded aluminium EN-AC-47100 bracket with powder-coated finish, suitable for C5 zones.
- A2 stainless steel hardware.

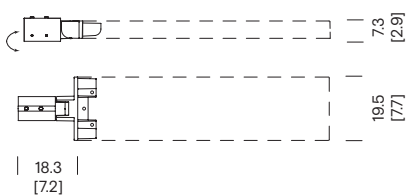
Installation

- Attach the accessory to the column sleeve, and then attach the luminaire to the accessory.
- The anchoring system is integrated into the luminaire.
- The accessory is delivered separately: no luminaire included.
- Instructions and hardware included.

Weight kg [lb]

- Accessory: 1 [2.2]
Approximate weight without packaging.

Dimensions cm [in]

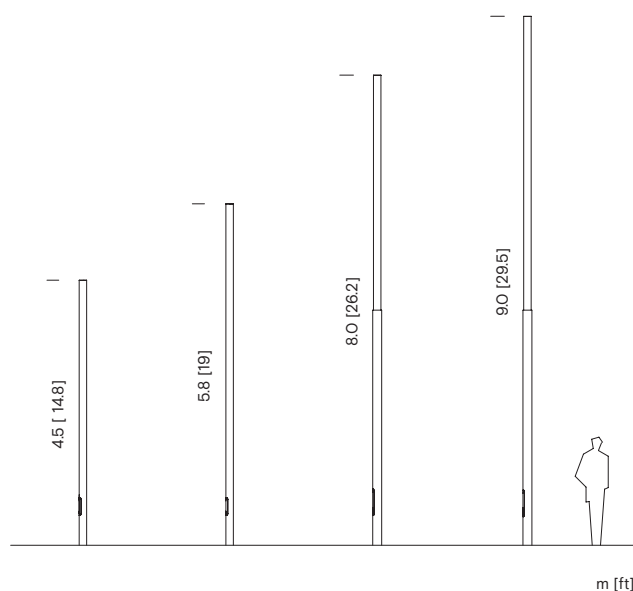


RAA06

Rama

Columns

Gonzalo Milá
2000

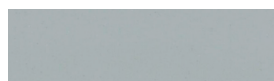


Product description

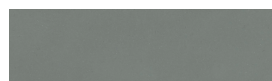
Characteristics

- One section (Ø 127 mm): 4.7 / 6.0 m.
- Two sections (Ø 152 mm / 127 mm): 8.2 / 9.2 m.

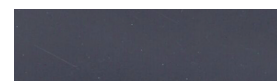
Finishes



Light grey



Medium grey



Dark grey

The colours shown are purely indicative. Other colours are available upon request. Check finishes for marine environments.

Materials

- Column, with one or two sections, made of hot-dip galvanized cylindrical S-275 JR Class 1 steel tube with a powder-coated finish, or with an lower shaft made of hot-dip galvanized steel with a powder-coated finish and an upper shaft made of AISI 304 stainless steel.
- Zinc-plated steel (275) bolts.
- Zinc-plated steel hardware.

Regulations

- 305/2011/EU
- UNE-EN 40
- UNE-EN-ISO 1461

Installation

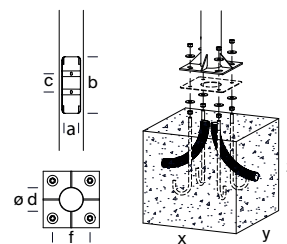
- Column secured via a concrete block, with a groove for electrical connection, which is produced on site with four anchoring bolts per column, 20 cm below the level of the pavement.
- Template and anchoring bolts included.

Bolts

- (4x) M18 x 500

Distance between bolts

- Columns 4.7 / 6.0 m: 210 x 210 mm
- Columns 8.2 / 9.2 m: 300 x 300 mm



Reference	Total height (m)	Visible height (m)	External measurements (d)	Thickness (mm)	Base plate (mm)	Distance between bolts (mm)	Bolts (x4) (f)	No. of openings	Opening (mm) (a/b/c)	Foundation (mm) (x/y/z)	No. of floodlights allowed
RAF11P**	4.7	4.4	Ø 127	3	300x300x10	210x210	M18x500	1	83/300/97	650x650x600	1/2
RAF21P**	6	5.8									2
RAF31P**											2
RAF51P**	8.2	8.0	Ø 127 Ø 152	3	400x400x10	300x300	M18x500	1	102/450/118 and 182	900x900x700	1/2
RAF54**											2
RAF61P**											
RAF62P**											
RAF64P**											
RAF65P**											
RAF71P**											5
RAF74P**	1/2										
RAF81P**	9.2	9.0	Ø 127 Ø 152	3	400x400x10	300x300	M18x500	2	102/450/118 and 182	900x900x700	2
RAF83P**											5
RAF85P**											2
RAF86P**											5

*Recommendations: for calculation in ground type II (according to UNE-40) and wind speed of 29 m/s, with soil formed by loose or wet sand of medium compactness (EO = 4800 KN/m²), with HM-20 concrete foundations. Information is not binding. We advise that checks are carried out at each location.