



Materials

Cylindrical supports and curved handrail, made of AISI 304 (optionally AISI 316) stainless steel with a sandblasted finish.

Installation and maintenance

The support legs are embedded 10 cm [3.94 in] below the ground and fixed with expansion anchors. Delivered unassembled and packaged in two parts: support legs and railing. Instructions, screws and anchor bolts are included. No functional maintenance is required. For further information log onto urbidermis.com

Standards

EN 10088, UNE EN-1090, ISO 1127, UNE 41510, UNE-EN 12329.

Finishes



Sandblasted

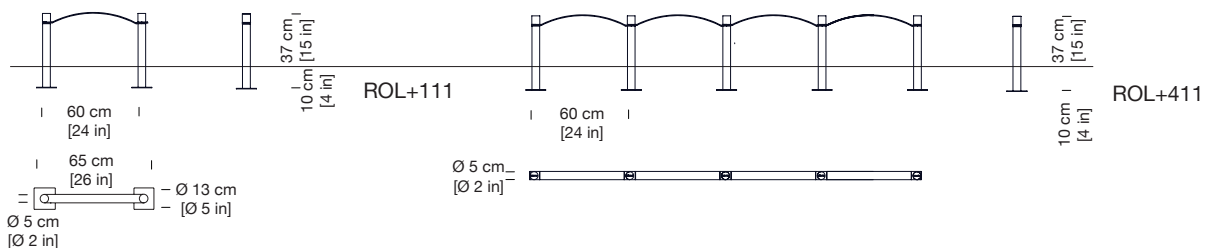
*The colours shown are merely indicative and may differ from reality. (Other colours available to order)

**Consult finishes for marine environments.

Weights kg [lb] (unpacked)

Module: 2 [4.41]

Support leg: 3.5 [7.72]



Headquarters Parc de Belloch
 Ctra. C-251, Km 5,6
 E-08430 La Roca (Barcelona, Spain)
 +34 938 619 100

Warehouse
 Carrer del Fou. Polígono Industrial Sud
 E-08440 Cardedeu (Barcelona, Spain)
 +34 938 619 182

