

Sizes in cm

Materials

A streetlamp formed by two columns with different heights made from hot galvanized steel, primed and painted in light grey, coupled in the form of a cross by an AISI 316 stainless steel axis. The tallest, tapered column measures 10 m [33 ft] in length and serves to support four swivelling Arne floodlights. This column may be installed separately. The other column, measuring 6 m [20 ft] in length, serves to support two linear modules. Stainless steel bracket painted in the same colour.

Finishes

Floodlight



Light grey

Pole



Light grey

Axis



AISI 316 stainless

*The colours shown are merely indicative and may differ from reality. (Other colours available to order)

**Consult finishes for marine environments.

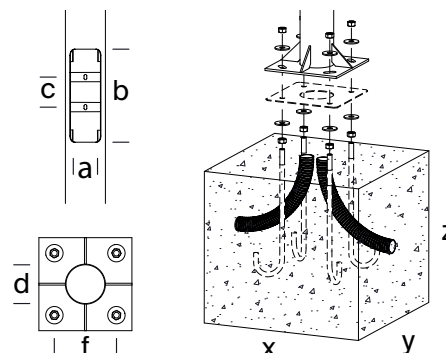
Installation

The pole is fixed using a concrete cube, with groove for wiring, made on-site and four pole anchor bolts, 24 cm [9 in] below the pavement surface. The element is delivered disassembled in four parts: pole, structure, brace and floodlights. Instructions, screws, template and pole anchor bolts are included.

For further information log onto urbidermis.com

Weight (kg)

Simple: 185.
Double: 340.



Reference	Total height (m)	Visible height (m)	Outer sizes (d) (m)	Thickness (mm)	Base plate (mm)	Distance between bolts (mm)	Bolts (x4) (f)	Doors n°	Door (a/b/c) (mm)	Foundation (x/y/z) (mm)	N° luminaires allowed
SAF11	9,98	9,74	222/102	4	Ø400x25	Ø312/119	M16x550	2	122x410x120	2500x1350x750	4
-	6,23	5,99	Ø139,7	5	Ø320x18	Ø230/88		1	96x300	2500x1350x750	2

Standards

CE RoHS



Protections

IP66 (the electrical components are protected from dust ingress and high-pressure water jets)
IK08 (protection against external mechanical impacts).

Electrical Class

Class I (CE)

UNE-EN 60529, UNE-EN 60598, UNE-EN 55015, UNE-EN 61000, UNE-EN 50102, UNE-EN 62031.
CE marked lighting system made by a laboratory certified by ENAC.

Light sources

High-efficiency optical unit with 36 LEDs

Nominal lamp power (W)

50

Lineal LED: 2x28

System power (W)

56

Lineal LED: 2x30

Operating current (mA)

Lineal LED (350), 36 LEDs (500)

Regulation

1-10V / DALI / Header flux regulation / Programmable automatic regulation.

The LED luminaire may be regulated using a number of differing interfaces. These controls allow specific, individual control of light, reducing energy consumption in a sustainable manner. Constant light output (clo) Assures a constant lumen output from the luminaire throughout its lifetime.

Power factor (cos φ):

N° LEDs	Current (mA)	P (W) 100%, CLO 80%
36	500	0.97

Operating voltage

220-240V 50-60Hz (CE)

Recommended wire

0,6/1 kV 3x2,5mm² / 0,6/1 kV 5x1,5mm² (prog.)

Temperature operating range (°C)

Ta 30.

Colour temperature (K)

3000 CRI min80

Power supply

Constant current driver

Lifetime

TM21 L70 (10k) > 60.000 h.

Thanks to an optimised thermal design, the luminous flux is maintained up to 70% after 60.000 h.

Light distributions

Symmetric



Wideflood

Reference	LED n°	Luminaire flux (lm)	Efficacy (lm/W)
ARP36B1xx	36	5805	104

Parc de Belloch headquarters

Ctra. C-251, Km 5,6

E-08430 La Roca (Barcelona, Spain)

+34 938 619 100

Warehouse

Carrer del Fou. Poligono Industrial Sud

E-08440 Cardedeu (Barcelona, Spain)

+34 938 619 181



Sistema de Gestión
ISO 9001:2015
ISO 14001:2015
www.tuv.com
ID: 300002291

Symmetric Wide Flood

Max. intensity 67734 cd/klm
(C=30°, G=60°)

C Halfplanes
0° - - - - - 180°
90° - - - - - 270°
22.5° ······ 157.5°

