

Táctil Marker

Antonio de Marco. 2007

Urbidermis



Materials

Made from a single piece of shotblasted corten steel plate, silhouetted by oxy-fuel cutting.

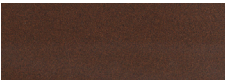
Installation and maintenance

The element is embedded 15 cm [6 in] below the floor, by means of a bolt part of the same piece inserted into a hole previously made on the pavement, filled with epoxy resin, quick cement or similar. The element is supplied assembled and packed. Instructions included. It does not require maintenance. For further information log onto urbidermis.com

Standards

EN 10 029, EN 10 163-2, UNE 41510.

Finishes



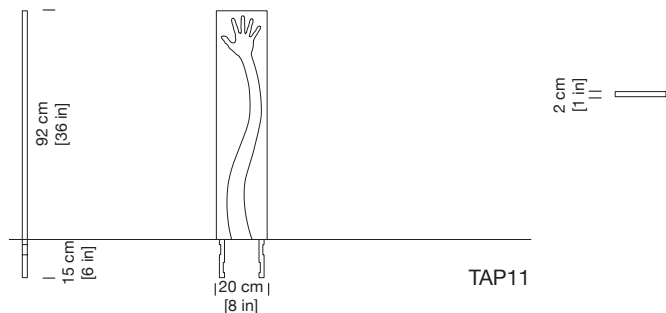
Corten

*The colours shown are merely indicative and may differ from reality. (Other colours available to order)

**Consult finishes for marine environments.

Weight kg [lb] (unpacked)

20 [44.09]



Headquarters Parc de Belloch
Ctra. C-251, Km 5,6
E-08430 La Roca (Barcelona, Spain)
+34 938 619 100

Warehouse
Carrer del Fou. Polígono Industrial Sud
E-08440 Cardedeu (Barcelona, Spain)
+34 938 619 182

