

# Trapecio Bench

Antonio Montes, Montse Periel. 2003

Urbidermis



## Materials

Structure created in hot-dip galvanized S275 JR steel, painted finish with C3 anti-corrosive protection. Seat and backrest composed of 4.50 m beams and approximately 20 x 40 cm section made from glued laminated wood that is protected with a trilayer coat of oil, or from reinforced mass-colored architectural concrete, with a stripped, aggregate, waterproof finish. A2 stainless steel screws.

## Installation and maintenance

Embedded fixation by means of four stainless steel anchor bolts per structure. Delivered in two parts: beams and structure. Instructions, screws and anchor bolts are included.

We recommend an annual inspection of the wood to assess its condition and detect possible deterioration or wear due to climate, use or location. Annual maintenance will preserve its properties and ageing.

## Standards

Wood element: UNE EN 335, UNE EN 12727, UNE EN 581, ISO 12944, UNE EN ISO 1461, UNE 41510, EN 338, EN 301.

UHPC concrete element: UNE-EN 13369, UNE-EN13198, UNE EN 771-3, ISO 12944, UNE EN ISO 1461, UNE 7178, UNE 146507, UNE-EN 12390-3, UNE-EN 12504, EHE 08.

## Finishes

### Structure



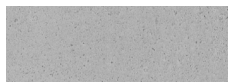
Light grey

### Beams



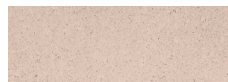
Glulam

### Beams



UHPC grey

### Beams



UHPC earth

\*The colours shown are merely indicative and may differ from reality. (Other colours available to order)

\*\*Consult finishes for marine environments.

## Approximate weight without packaging (kg)

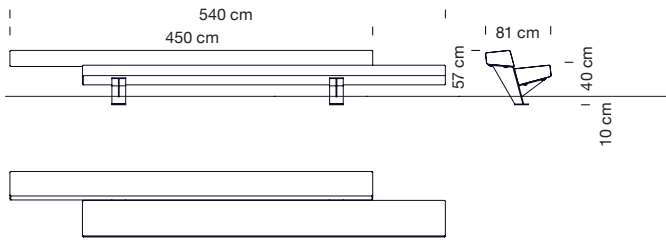
Wood bench: 380

UHPC concrete bench: 1062

# Trapezio Bench

Antonio Montes, Montse Periel. 2003

Urbidermis



TRB11

TRB21

TRB23

Measurements in cm

Headquarters Parc de Belloch  
Ctra. C-251, Km 5,6  
E-08430 La Roca (Barcelona, Spain)  
+34 938 619 100

Warehouse  
Carrer del Fou. Polígono Industrial Sud  
E-08440 Cardedeu (Barcelona, Spain)  
+34 938 619 182

